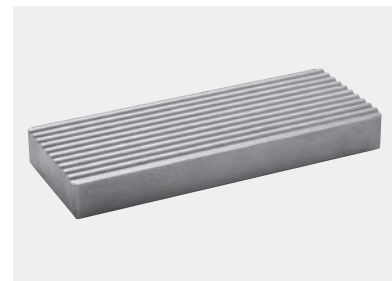


multiLine

SURFACE AND PROFILE GRINDING MACHINE



WORK PIECES UP TO
4000 × 1020 × 750 MM [L × W × H]



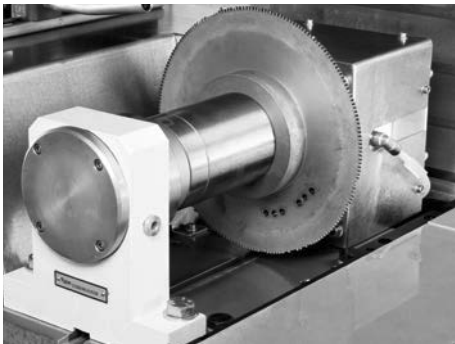
ROBUST AND ECONOMICAL

- ✓ Large grinding width and length
- ✓ Grinding spindle with pre-loaded precision bearings
- ✓ High table load capacity
- ✓ Large variety of options available

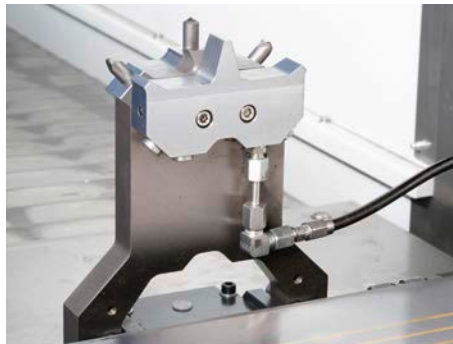
INDIVIDUAL SOLUTION FOR SURFACE AND PROFILE GRINDING

multiLine - INDIVIDUAL SOLUTION FOR SURFACE AND PROFILE GRINDING

- ✔ Large grinding widths and lengths up to 6 meters as compact single column construction
- ✔ Additional vertical spindle as option
- ✔ Fast oscillation with short overtravel and precise positioning through linear motor table drive
- ✔ Wear free and quiet linear drive, table velocity up to 60 m/min
- ✔ High acceleration and deceleration of main axis
- ✔ Z-axis via traveling headstock allow large grinding lengths and stability
- ✔ Controls: xpressCube for surface grinding or Sinumerik 840 D for profile grinding
- ✔ Various dressing device options



Rotating dressing unit



Tilt dressing unit with 3 diamonds



Swivel dresser

TECHNICAL DATA						
multiLine	10	15	20	30	40	60
Drive system	KGT/HYD*	KGT/HYD*	KGT/HYD*	LIM*	LIM*	LIM*
Grinding width [mm]	700 / 900					
Grinding length [mm]	1000	1500	2000	3000	4000	6000
Distance spindle center to table [mm]	920 / 1120					
Spindle power [kW]	11 / 22 / 37					
Spindle cone [mm]	75 / 90					
Grinding wheel [mm]	400 × 60 × 127			500 × 150 × 203		

* KGT = Ball screw; HYD = Hydraulic cylinder; LIM = Linear motor

GET IN TOUCH WITH US TODAY
TOGETHER WE WILL FIND A SOLUTION
FOR YOUR REQUIREMENTS

ELB-SCHLIFF Werkzeugmaschinen GmbH

Phone: +49 6028 408 0

info@elb-schliff.de

www.elb-schliff.de