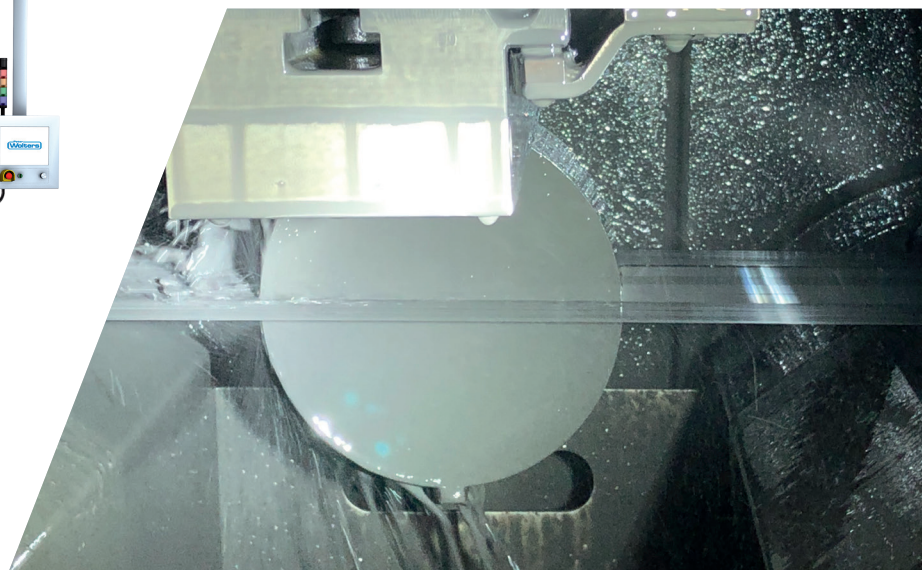
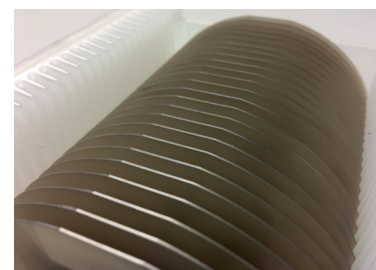
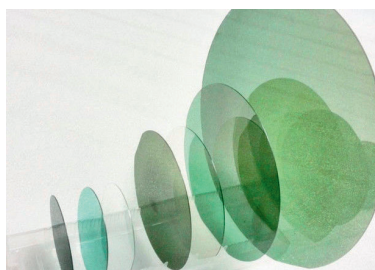


DW 288 S4 SLURRY

MULTI WIRE SAW



WORK PIECE DIMENSIONS:
MAX. Ø 8" × 420 MM



PRECISION AND STABILITY WITH SLURRY TECHNOLOGY

- ✓ Optimized cutting fluid management for slurry
- ✓ Best in class for SiC and 8" semiconductor industry
- ✓ Versatile applications for different formats

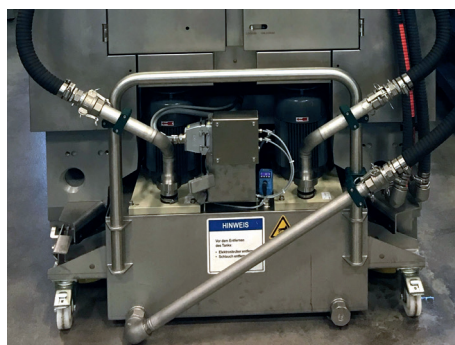
SLURRY SLICING TECHNOLOGY FOR SILICON CARBIDE AND HART MATERIALS

HIGHLIGHTS DW 288 S4 SLURRY

- ✔ Based on widely adopted and successful DW 288 product family
- ✔ Sophisticated work piece rocking for maximum precision
- ✔ Only 6 pulleys for optimal use of diamond wire
- ✔ Application and material dependent options available
- ✔ Process driven production assistant on touch screen HMI
- ✔ Recipe generator for 60-step recipe
- ✔ Ready for Industry 4.0
- ✔ Options: Adaptive feed for optimized cutting process



High wire volume for higher capacity



Optimized cutting fluid system for lower downtime



Easy accessibility for higher uptime

TECHNICAL DATA	DW 288 S4 SLURRY FEATURES
Web length [mm]	420
Max. work piece dimensions [mm]	Ø 206 (optional Ø 230) × 420
Wire speed [m/s]	25 (1500m/min)
Min. wire diameter [µm]	100
Max. wire tension [N]	45
Rocking principle	Rocking of work piece
Rocking angle [°]	± 12
Wire guide roller axis distance [mm]	540
Cutting fluid tank [l]	240
Machine dimensions [L × W × H] [mm]	3620 × 1780 × 3010
Machine weight [kg]	10500

**GET IN TOUCH WITH US TODAY
TOGETHER WE WILL FIND A SOLUTION
FOR YOUR REQUIREMENTS**

LAPMASTER WOLTERS GMBH
Phone: +49 4331 458 0
wiresaws@lapmaster-wolters.de
www.lapmaster-wolters.de